



CLASS: VII
DATE: 16.01.2024

MAX MARKS: 20 MARKS
TIME: 40 MINUTES

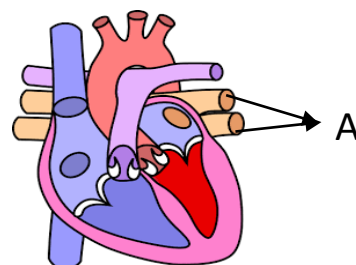
General Instructions:

- This question paper consists of 10 questions.
- **Section A** consists of 6 objective-type questions carrying 1 mark each.
- **Section B** consists of one very short question carrying 2 marks, one short answer type question carrying 3 marks, and one long answer type question carrying 5 marks.
- **Section C** consists of a case-based unit of assessment of 4 marks with sub-parts

SECTION A

Select and write one most appropriate option out of the four options given for each of the following questions 1 to 6:

1. Seeds of grass and madar are carried to long distances by wind because they are (1)
a) spiny seeds
b) large and hairy seeds
c) long and ridged fruits
d) light seeds
2. Sexual reproduction involves (1)
a) male gametes
b) female gametes
c) both male and female gametes
d) either male or female gametes
3. Identify the label marked **A** that carries the blood towards the heart. (1)
a) atria
b) pulmonary vein
c) aorta
d) ventricle



4. Name the process that generates a force that pulls up the water from the soil to reach the stem and leaves of plant. (1)
a) Respiration
b) Excretion
c) Photosynthesis
d) Transpiration

Assertion Reason:

5. **Assertion (A):** Animals like sponges and hydra do not possess any circulatory system. (1)
Reason (R): Sponges and hydra are small animals, and therefore they do not have a circulatory system.
a) Both A and R are true and R is the correct explanation of A.
b) Both A and R are true but R is not the correct explanation of A.
c) A is true but R is false.
d) A is false but R is true.

6. **Assertion (A):** Arteries have a thick elastic wall. (1)

Reason (R): In arteries, blood flow is rapid and at high pressure

- a) Both A and R are true and R is the correct explanation of A.
- b) Both A and R are true but R is not the correct explanation of A.
- c) A is true but R is false.
- d) A is false but R is true.

SECTION B

7. a) State one disadvantage of vegetative propagation. (1)

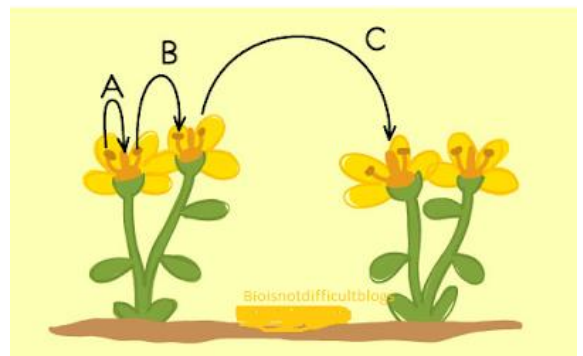
b) Name the process of asexual reproduction shown by the following organisms.

- i) Yeast (1)
- ii) Fungus (1)

8. Differentiate between arteries and veins. **(three points)** (3)

9. Observe the given figure and answer the following questions. (5)

- (a) What is pollination?
- (b) Identify the type of pollination shown in label A and define it.
- (c) Give one difference between unisexual and bisexual flowers with one example for each.



SECTION C

10. Shan's uncle was diagnosed with kidney failure and rushed to hospital. He was supported by an artificial kidney till he got a suitable donor. Soon he underwent a kidney transplantation and was recovered.

- a) Suggest any one way by which Shan's uncle can get relief in case of kidney failure. (1)
- b) What is excretion? (1)
- c) Why do we need to remove waste products from our body from time to time? (2)

Or

Write the names of four organs of the human excretory system in their correct sequence.
